

Computer Aided Design

Our mechanical and structural design expertise is supported by an extensive in-house Computer Aided Design (CAD) Draughting facility under the leadership of John Bullock - Chief Draughtsman.

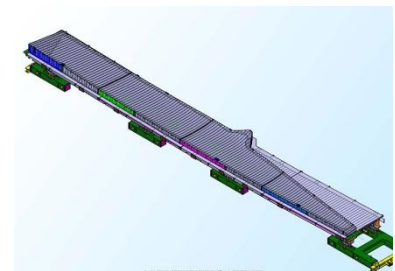
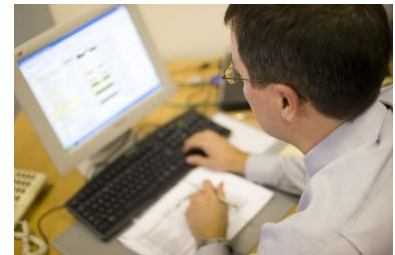
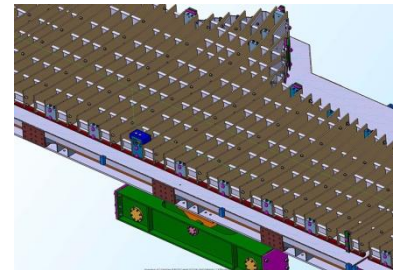
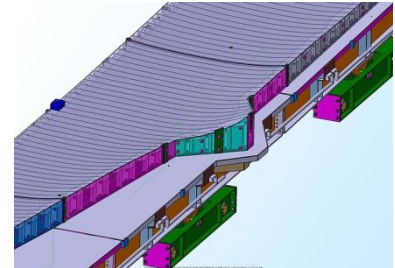
Probably the most widely used CAD package in current use is AutoCAD, the latest versions of which have 3D facility thus greatly enhancing its graphics capability.

We use AutoCAD to produce detailed and concept design drawings as well as generating key data for input modelling software such as ANSYS for Finite Element Stress Analysis. So versatile is CAD that many clients call on it to produce what would only have previously been possible with an artist's impression.

Associated software linked to AutoCAD enhances piping and plant design. These incorporate true 3D modelling which enables better visualisation of complex piping layouts. Use of these packages in the hands of experienced designers enables more precise project planning and can reduce site clashing problems to a considerable extent.

Continual investment in hardware and software helps to maintain the company's standing as a design house with an international reputation for mechanical and structural design.

We have BS EN ISO9001 Certification related to the Quality Management System for its Mechanical and Structural Design Services.



Atkins Ltd

Bennett House, Pleasley Road, Whiston, Rotherham, S60 4HQ, UK. Tel: +44 (0)1709 373782
www.bennettmg.co.uk